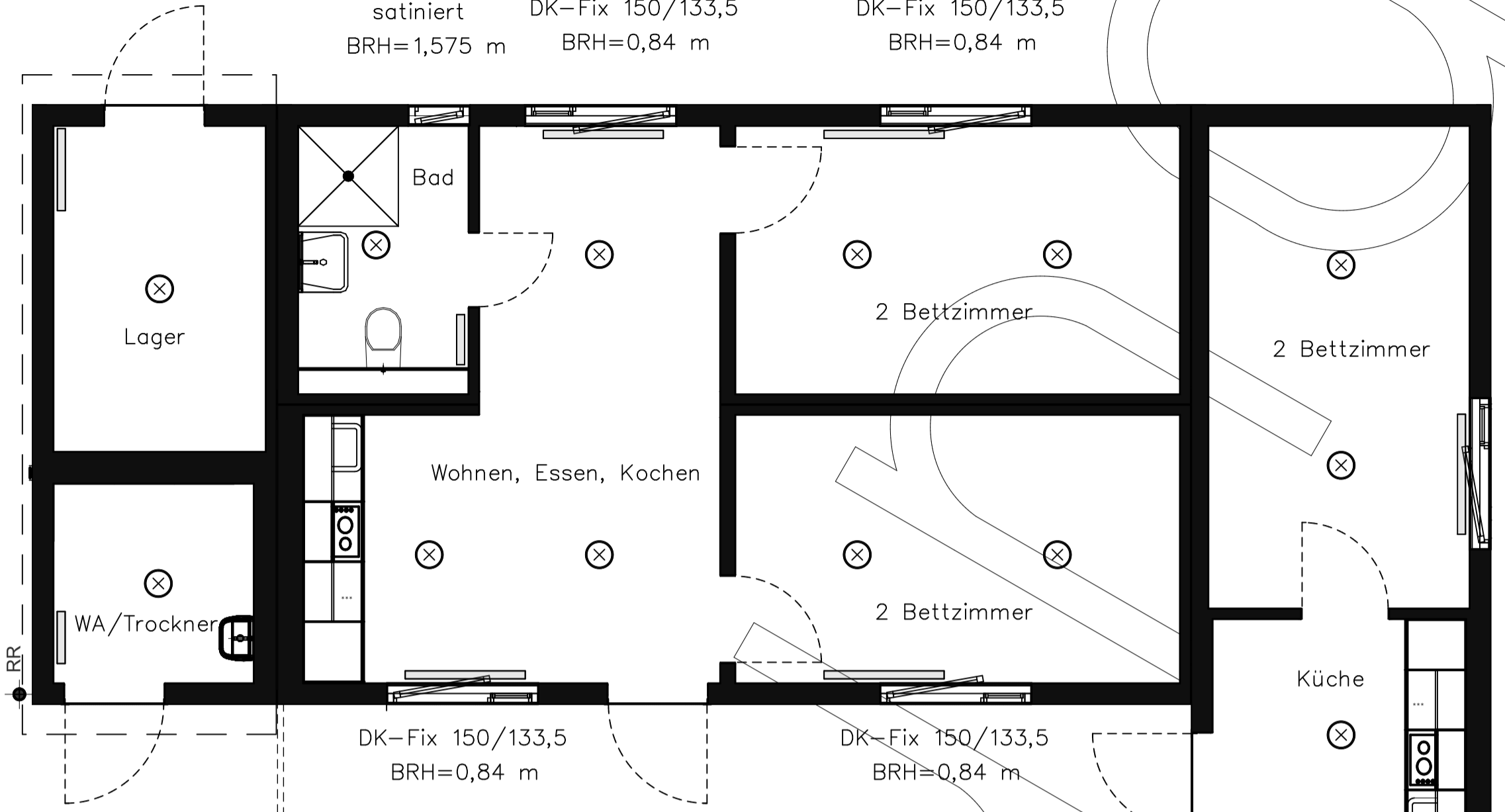


DK 60/63
satinert
BRH=1,575 m

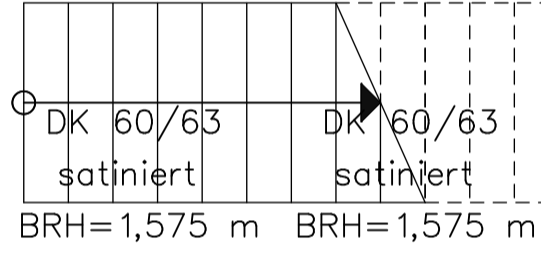
DK-Fix 150/133,5
BRH=0,84 m

DK-Fix 150/133,5
BRH=0,84 m



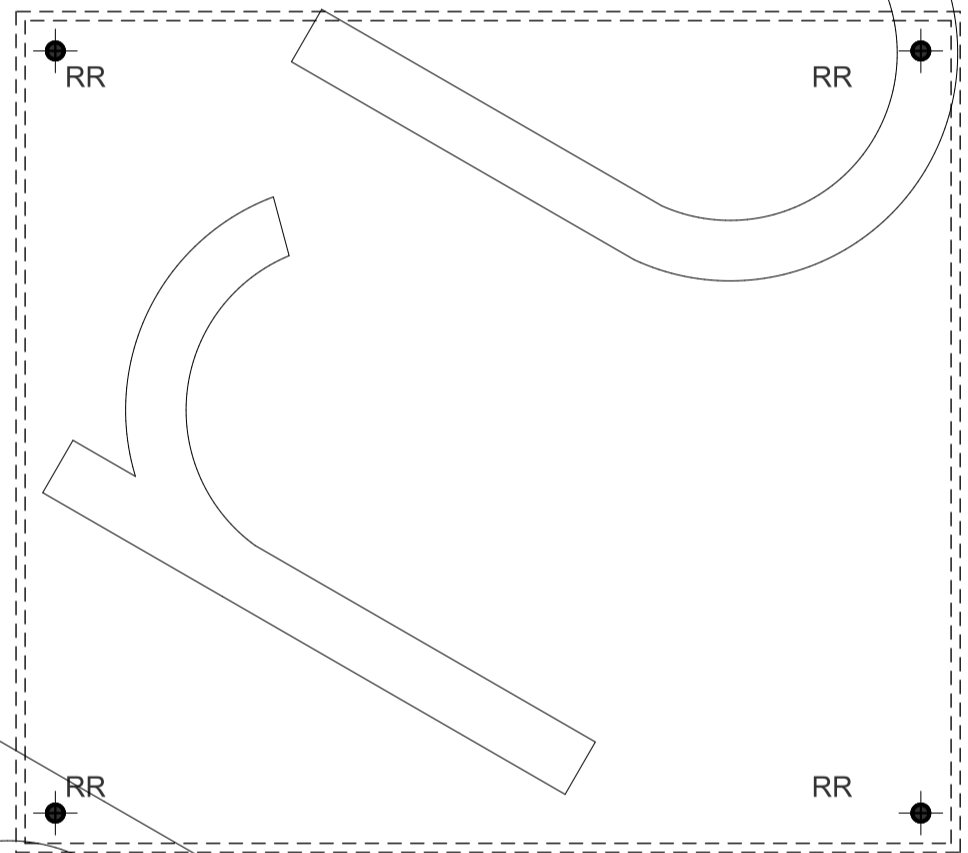
DK-Fix 150/133,5
BRH=0,84 m

DK 60/63
satinert
BRH=1,575 m



DK-Fix 150/133,5
BRH=0,84 m

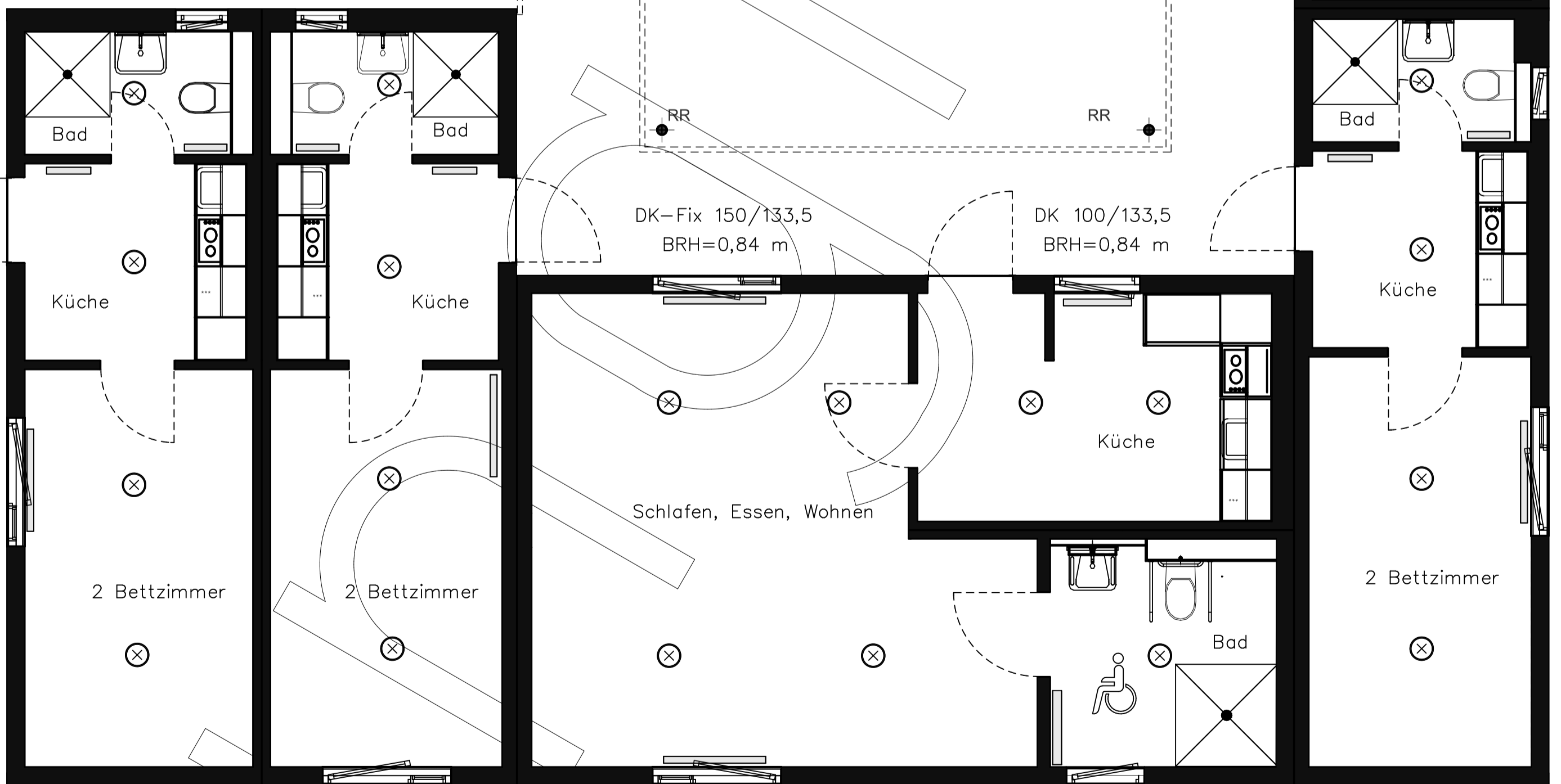
DK-Fix 150/133,5
BRH=0,84 m



DK 60/63
satinert
BRH=1,575 m

DK-Fix 150/133,5
BRH=0,84 m

DK 100/133,5
BRH=0,84 m



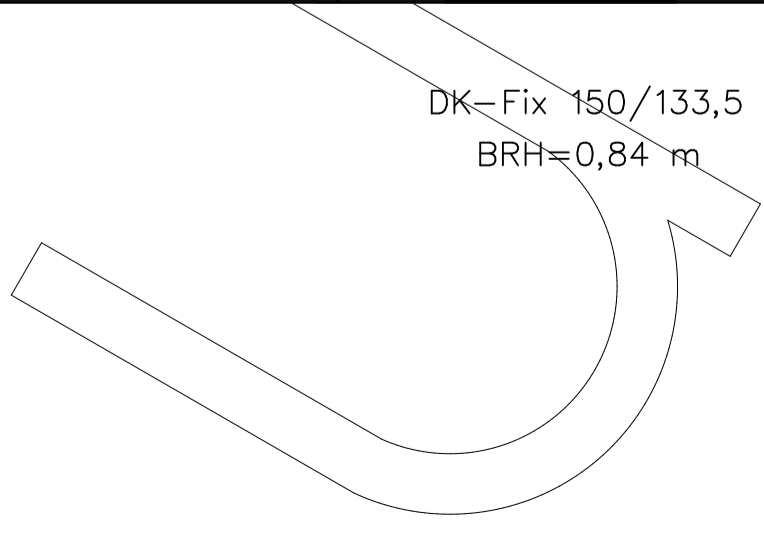
DK-Fix 150/133,5
BRH=0,84 m

DK-Fix 150/133,5
BRH=0,84 m

DK-Fix 150/133,5
BRH=0,84 m

DK-Fix 150/133,5
BRH=0,84 m

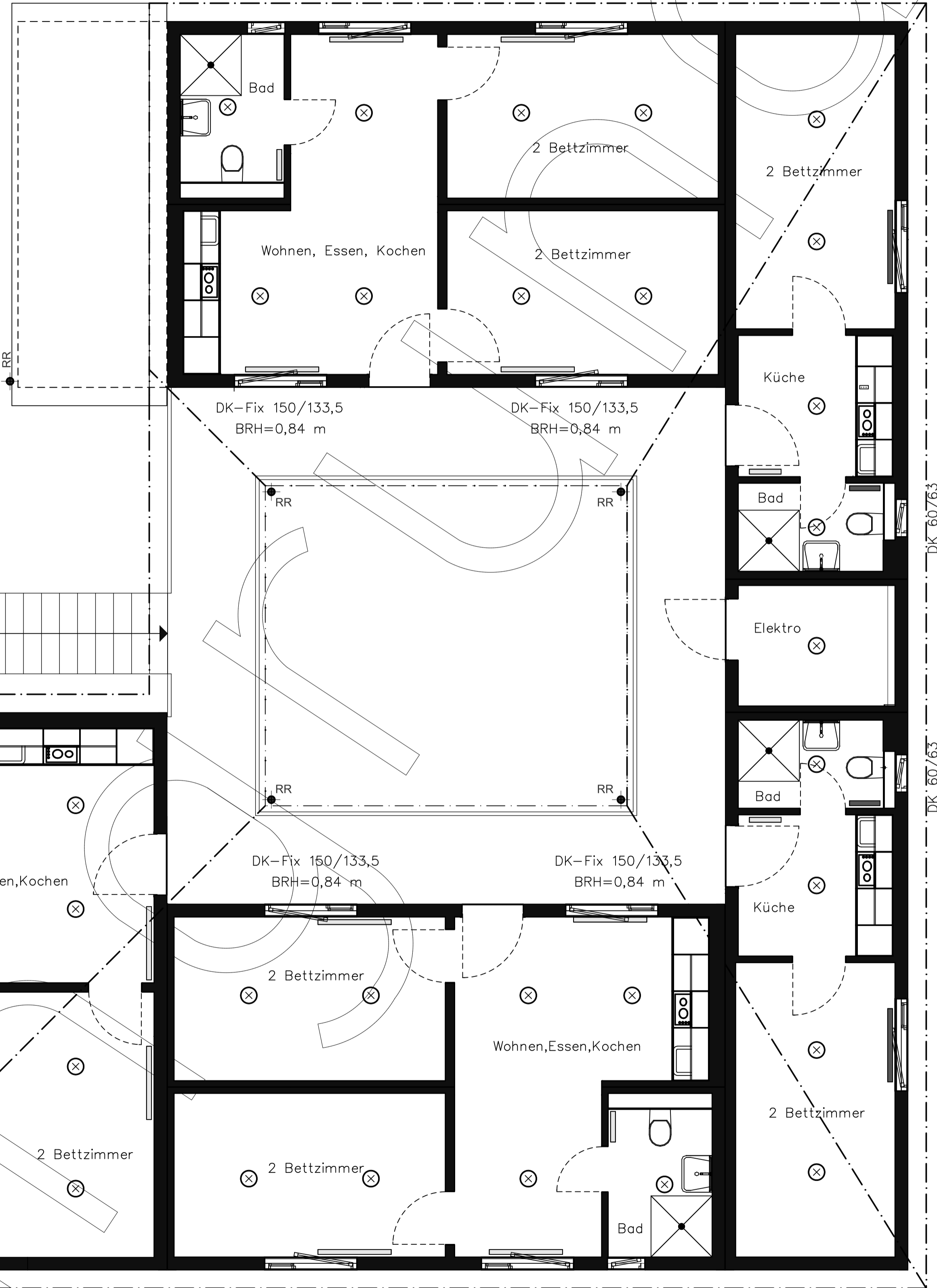
DK 60/63
satinert
BRH=1,575 m



DK 60/63
satiert
BRH=1,575 m

DK-Fix 150/133,5
BRH=0,84 m

DK-Fix 150/133,5
BRH=0,84 m



DK-Fix 150/133,5
BRH=0,84 m

DK 60/63
satiert
BRH=1,575 m

DK 60/63
satiert
BRH=1,575 m

DK-Fix 150/133,5
BRH=0,84 m

DK 60/63
satiert
BRH=1,575 m

DK-Fix 150/133,5
BRH=0,84 m

DK-Fix 150/133,5
BRH=0,84 m

DK-Fix 150/133,5
BRH=0,84 m

DK-Fix 150/133,5
BRH=0,84 m

DK 60/63
satiert
BRH=1,575 m